

# caldera

AT RED MOUNTAIN RESORT



VIEW

OWN

BUILD

OPPORTUNITY

IN BC'S BEST SKI IN PROPERTIES

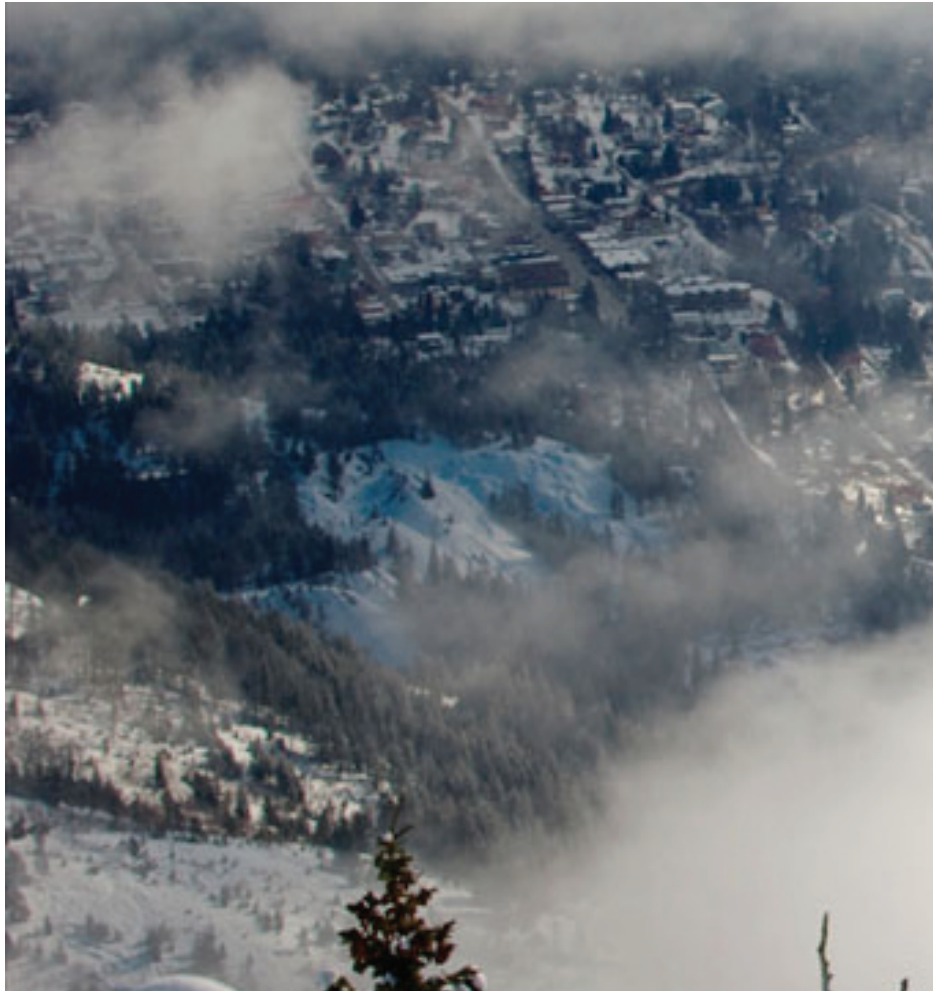


**MOUNTAIN RESORT**  
ROSSLAND, B.C. | [www.redresort.com](http://www.redresort.com)

VIEW

OWN

BUILD





A scenic photograph of two skiers standing on a snow-covered mountain peak. The skier on the left is wearing a dark jacket and the one on the right is wearing a bright blue jacket. They are both holding ski poles and have their arms raised in a celebratory gesture. In the background, a small town is visible through a layer of mist or low clouds. The foreground shows the texture of the snow and some evergreen branches.

# MOUNTAIN DREAMLAND

IF YOU THOUGHT THE ORIGINAL SKI TOWN WAS GONE,  
YOU'VE THOUGHT WRONG. WELCOME TO ROSSLAND.

VIEW

OWN

BUILD







# FRAME YOUR VIEW

---

YOUR BACKYARD WILL ALWAYS REMAIN YOUR PLAYGROUND.  
ONLY 3 LOTS AVAILABLE FOR DEVELOPMENT.

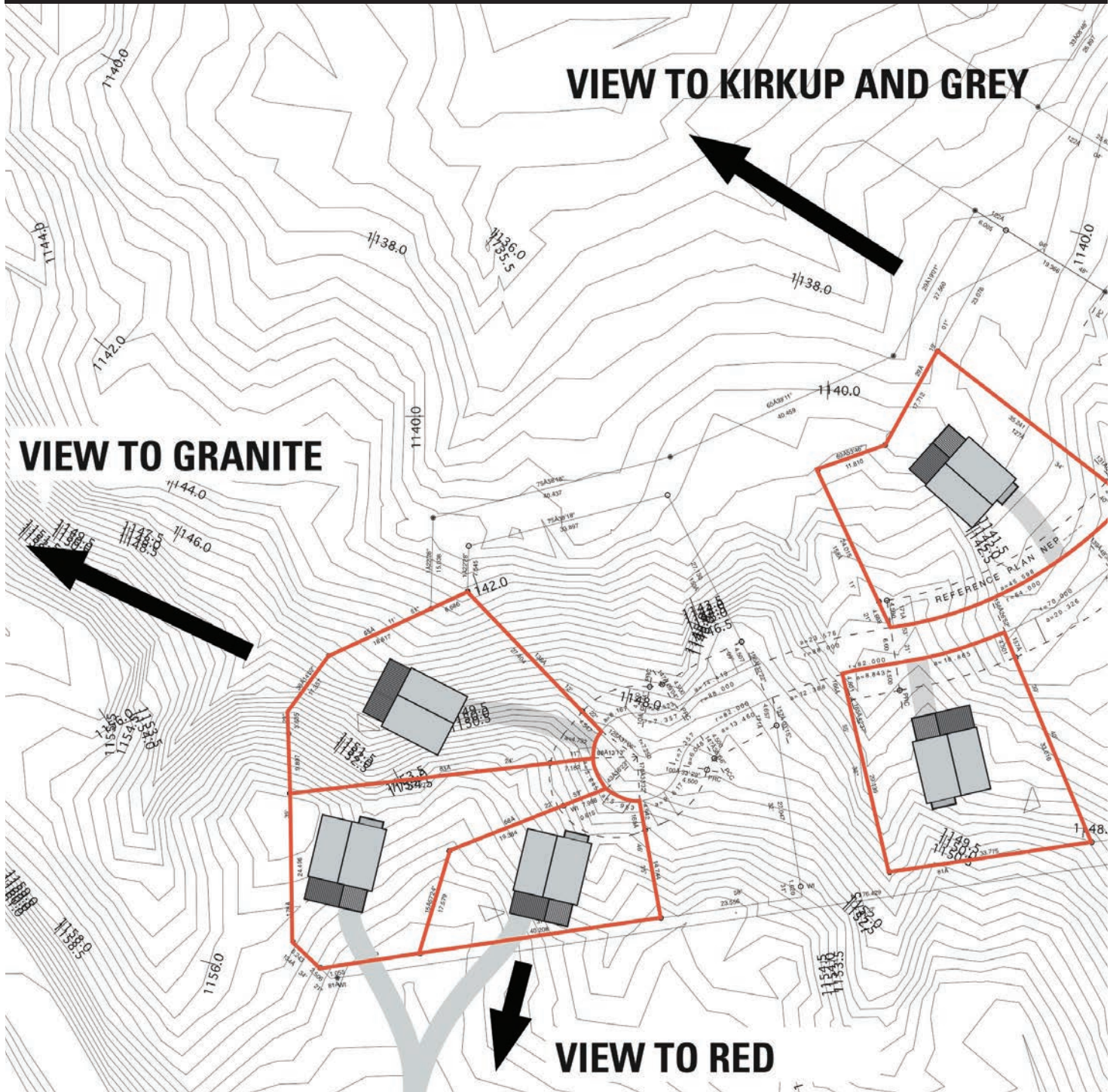


VIEW

OWN

BUILD

LOT INFO





[illegible]

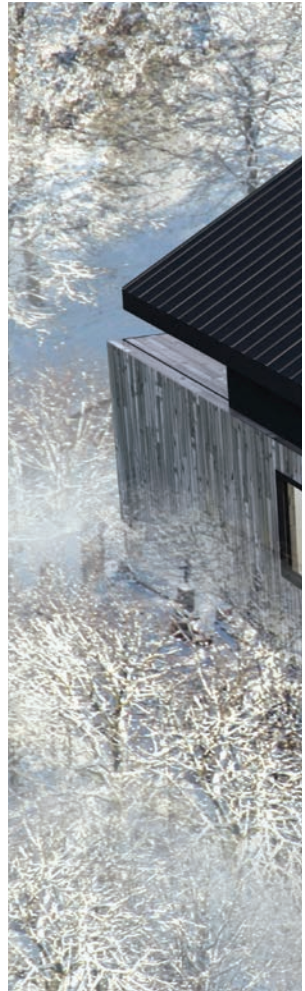
NOTES:

[illegible]

VIEW

OWN

BUILD





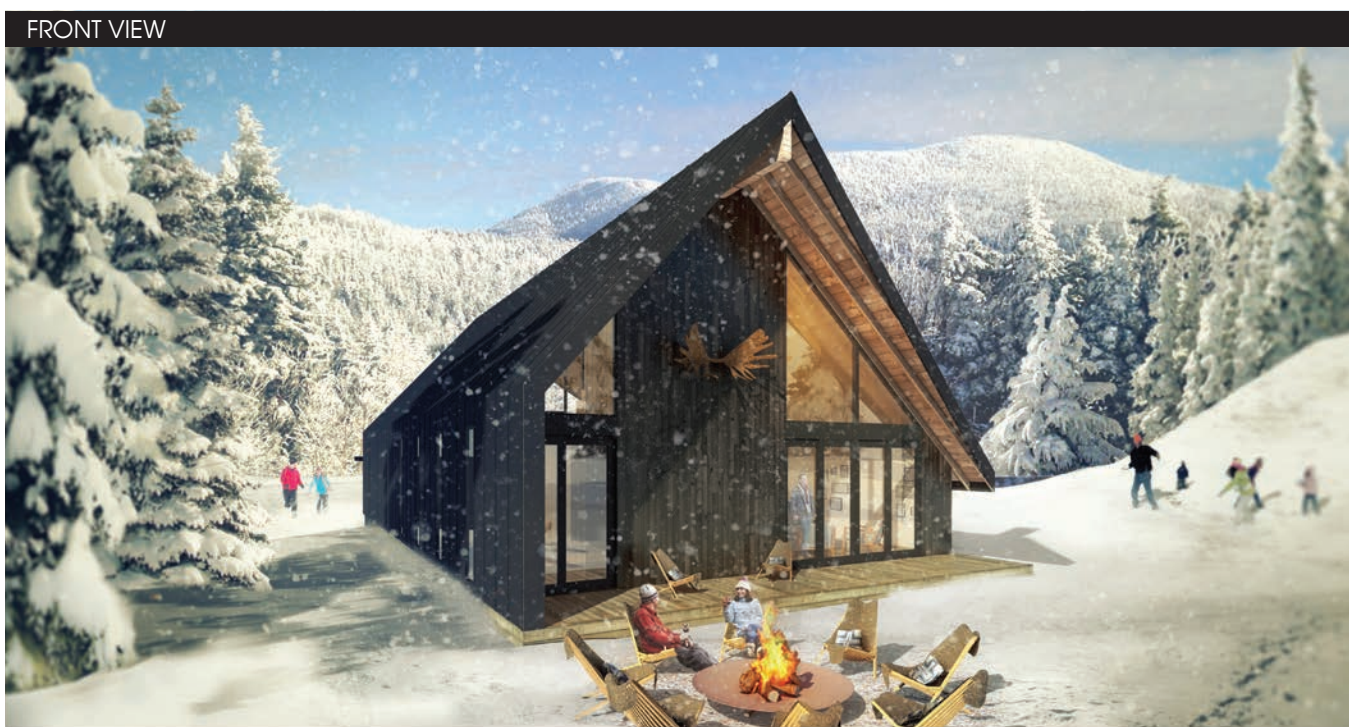


# MODERN MOUNTAIN LIFE

**SKYLAB ARCHITECTURE:** BASED IN PORTLAND DRIVEN BY CREATIVITY, POSSIBILITY AND INTENT, DESIGNING ENVIRONMENTS THAT CREATE LASTING EFFECTS ON THE NATURAL AND BUILT WORLDS.



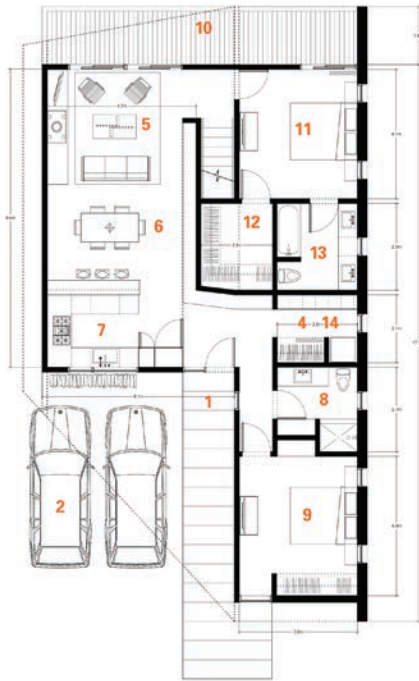
VIEW OWN BUILD





# SMALL

## LEVEL 2 | MAIN FLOOR



- 1 ENTRY
- 2 GARAGE
- 3 SKI LOCKER
- 4 MUD ROOM
- 5 LIVING
- 6 DINING
- 7 KITCHEN
- 8 BATH
- 9 BEDROOM
- 10 DECK
- 11 MASTER BEDROOM
- 12 MASTER CLOSET
- 13 MASTER BATH
- 14 LAUNDRY
- 15 BUNK BED
- 16 STORAGE

### CABIN OPTION 01

GROSS: 1424 ft<sup>2</sup>  
NET CONDITIONED: 1250 ft<sup>2</sup>  
CARPORT: 441 ft<sup>2</sup>

### CABIN OPTION 02

GROSS: 1424 ft<sup>2</sup>  
NET CONDITIONED: 1250 ft<sup>2</sup>  
DECK: 441 ft<sup>2</sup>

## LEVEL 1 | GARAGE



- 1 ENTRY
- 2 GARAGE
- 3 SKI LOCKER
- 4 MUD ROOM
- 8 BATH
- 9 BEDROOM
- 14 LAUNDRY
- 17 MECHANICAL

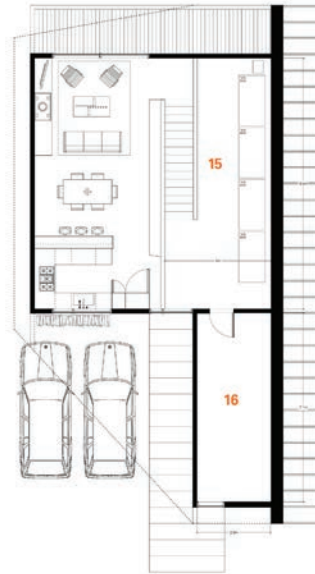
### CABIN OPTION 01

GARAGE: UNCONDITIONED  
USABLE AREA: 1004 ft<sup>2</sup>  
NET UNCONDITIONED: 90 ft<sup>2</sup>

GARAGE: CONDITIONED  
GROSS: 1004 ft<sup>2</sup>  
GROSS: 962 ft<sup>2</sup>

GARAGE: HALF CONDITIONED  
GROSS: 1004 ft<sup>2</sup>  
NET CONDITIONED: 586 ft<sup>2</sup>  
NET UNCONDITIONED: 376 ft<sup>2</sup>

## LEVEL 3 | LOFT



### SQUARE FOOTAGE TOTALS

GROSS: 528 ft<sup>2</sup>  
NET CONDITIONED: 486 ft<sup>2</sup>

### CABIN OPTION 01 TOTAL

LEVEL 1 GARAGE  
UNCONDITIONED: 90 ft<sup>2</sup>  
LEVEL 2 MAIN FLOOR: 1424 ft<sup>2</sup>  
LEVEL 3 LOFT: 528 ft<sup>2</sup>  
TOTAL CONSTRUCTION: 2042 ft<sup>2</sup>  
W/ USABLE AREA: 1004 ft<sup>2</sup>

LEVEL 1 GARAGE  
HALF CONDITIONED: 586 ft<sup>2</sup>  
LEVEL 2 MAIN FLOOR: 1424 ft<sup>2</sup>  
LEVEL 3 LOFT: 528 ft<sup>2</sup>  
TOTAL CONSTRUCTION: 2538 ft<sup>2</sup>

LEVEL 1 GARAGE  
CONDITIONED: 1004 ft<sup>2</sup>  
LEVEL 2 MAIN FLOOR: 1424 ft<sup>2</sup>  
LEVEL 3 LOFT: 528 ft<sup>2</sup>  
TOTAL CONSTRUCTION: 2958 ft<sup>2</sup>

### CABIN OPTION 02 TOTAL

LEVEL 1 MAIN FLOOR: 1424 ft<sup>2</sup>  
LEVEL 2 LOFT: 528 ft<sup>2</sup>  
TOTAL CONSTRUCTION: 1952 ft<sup>2</sup>

- 15 LOFT BEDROOM
- 16 OWNER'S LOCK OFF

VIEW OWN BUILD

FRONT VIEW



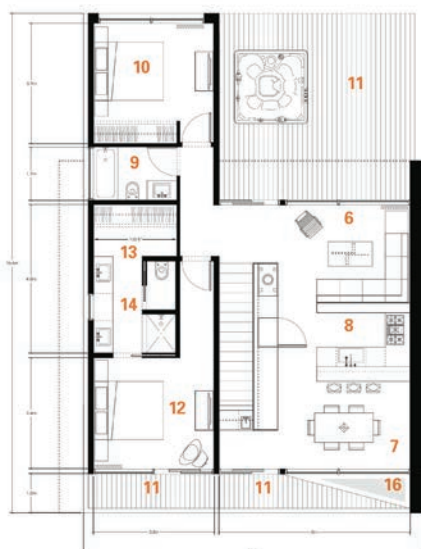
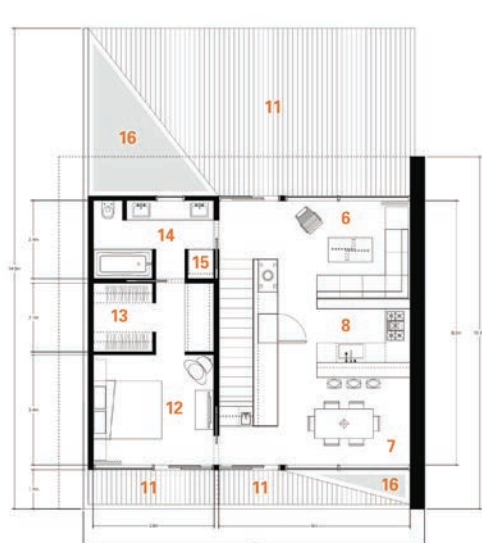
REAR VIEW





# MEDIUM

## LEVEL 2 | MAIN FLOOR



- 1 ENTRY
- 2 GARAGE
- 3 SKI LOCKER
- 4 MUD ROOM
- 5 MECHANICAL
- 6 LIVING
- 7 DINING
- 8 KITCHEN
- 9 BATH
- 10 BEDROOM
- 11 DECK
- 12 MASTER BEDROOM
- 13 MASTER CLOSET
- 14 MASTER BATH
- 15 LAUNDRY
- 16 GREEN ROOF

### CABIN OPTION 01

GROSS: 908 ft<sup>2</sup>  
NET CONDITIONED: 788 ft<sup>2</sup>  
CARPORT: 441 ft<sup>2</sup>

### CABIN OPTION 02

GROSS: 1225 ft<sup>2</sup>  
NET CONDITIONED: 1026 ft<sup>2</sup>  
\*LAUNDRY MOVED TO GARAGE LEVEL

## LEVEL 1 | GARAGE

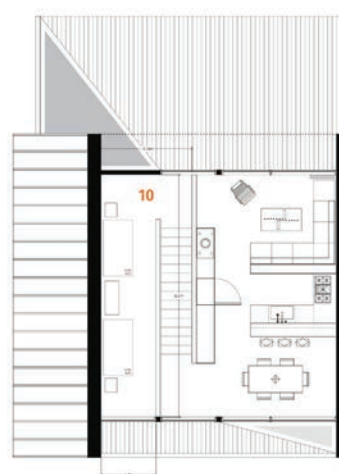


- 1 ENTRY
- 2 GARAGE
- 3 SKI LOCKER
- 4 MUD ROOM
- 5 MECHANICAL
- 9 BATH
- 10 BUNK ROOM

### SQUARE FOOTAGE TOTALS

GROSS: 930 ft<sup>2</sup>  
NET CONDITIONED: 454 ft<sup>2</sup>  
NET UNCONDITIONED: 319 ft<sup>2</sup>

## LEVEL 3 | LOFT



- 10 BUNK ROOM

### SQUARE FOOTAGE TOTALS

GROSS: 210 ft<sup>2</sup>  
NET CONDITIONED: 187 ft<sup>2</sup>

### CABIN OPTION 01 TOTAL

LEVEL 1 GARAGE: 930 ft<sup>2</sup>  
LEVEL 2 MAIN FLOOR: 908 ft<sup>2</sup>  
LEVEL 3 LOFT: 210 ft<sup>2</sup>  
TOTAL CONSTRUCTION: 2048 ft<sup>2</sup>

### CABIN OPTION 02 TOTAL

LEVEL 1 GARAGE: 930 ft<sup>2</sup>  
LEVEL 2 MAIN FLOOR: 1225 ft<sup>2</sup>  
LEVEL 3 LOFT: 210 ft<sup>2</sup>  
TOTAL CONSTRUCTION: 2365 ft<sup>2</sup>

FRONT VIEW



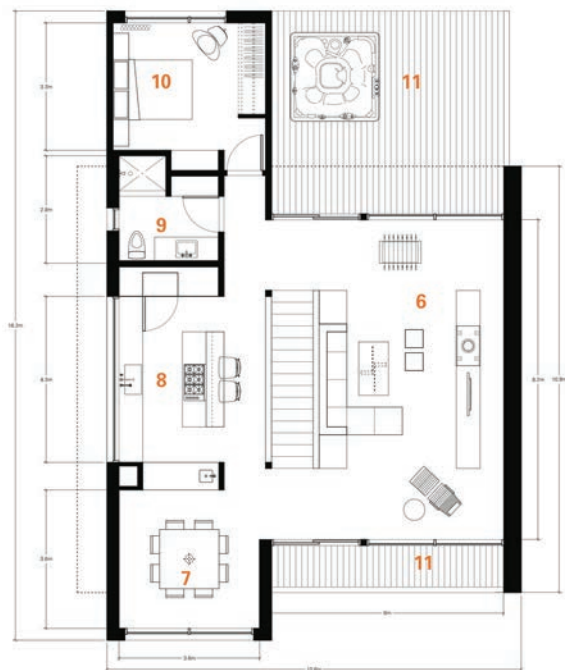
REAR VIEW





# LARGE

## LEVEL 2 | MAIN FLOOR



- 6 LIVING
- 7 DINING
- 8 KITCHEN
- 9 BATH
- 10 BEDROOM
- 11 DECK

**SQUARE FOOTAGE TOTALS**  
GROSS: 1332 ft<sup>2</sup>  
NET CONDITIONED: 1162 ft<sup>2</sup>

## LEVEL 1 | GARAGE



### CABIN OPTION 01

GROSS: 930 ft<sup>2</sup>  
NET CONDITIONED: 261 ft<sup>2</sup>  
NET UNCONDITIONED: 515 ft<sup>2</sup>

### CABIN OPTION 02

GROSS: 1149 ft<sup>2</sup>  
NET CONDITIONED: 261 ft<sup>2</sup>  
NET UNCONDITIONED: 717 ft<sup>2</sup>

- 1 ENTRY
- 2 GARAGE
- 3 STORAGE
- 4 LAUNDRY
- 5 UTILITY

## LEVEL 3 | LOFT



- 9 BATH
- 10 BEDROOM
- 11 DECK
- 12 MASTER BED
- 13 MASTER BATH

### CABIN OPTION 01

GROSS: 372 ft<sup>2</sup>  
NET CONDITIONED: 347 ft<sup>2</sup>

### CABIN OPTION 02

GROSS: 600 ft<sup>2</sup>  
NET CONDITIONED: 544 ft<sup>2</sup>

### CABIN OPTION 01 TOTAL

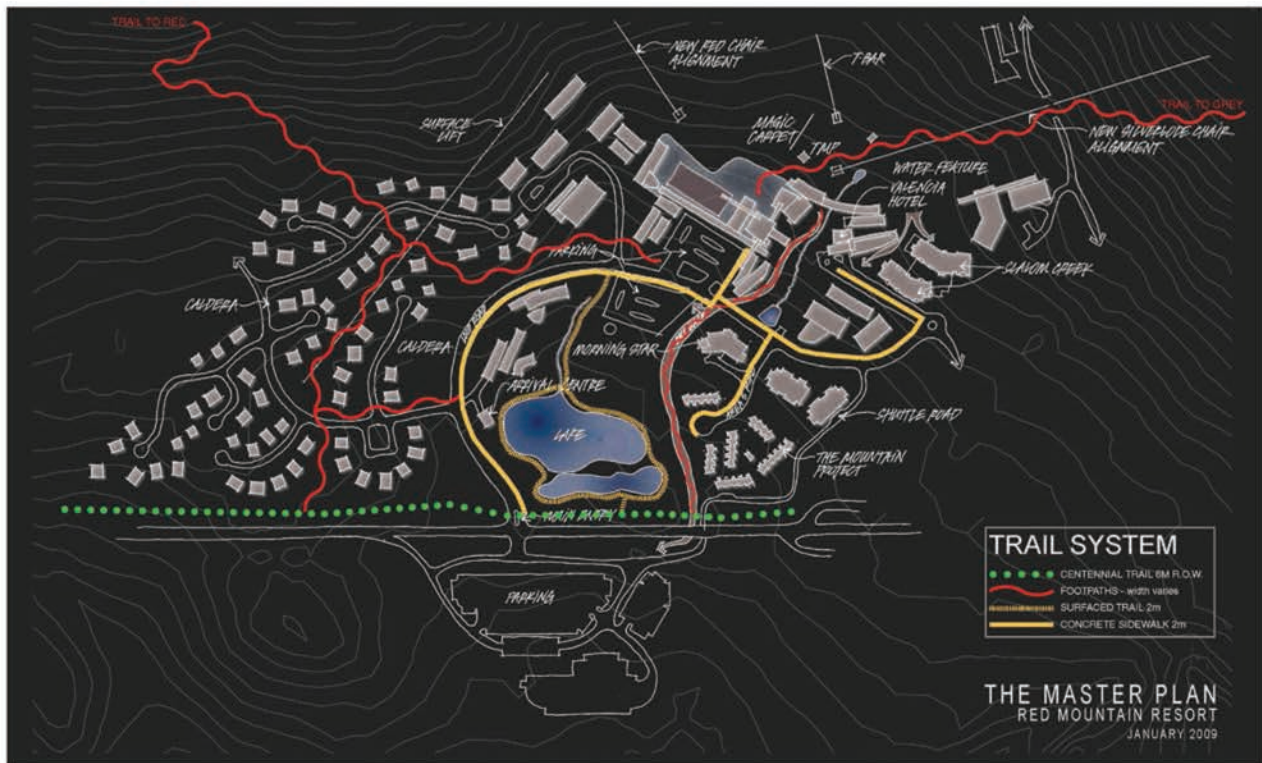
LEVEL 1 GARAGE: 930 ft<sup>2</sup>  
LEVEL 2 MAIN FLOOR: 1332 ft<sup>2</sup>  
LEVEL 3 MASTER BED-LOFT: 372 ft<sup>2</sup>  
TOTAL CONSTRUCTION: 2634 ft<sup>2</sup>

### CABIN OPTION 02 TOTAL

LEVEL 1 GARAGE: 1149 ft<sup>2</sup>  
LEVEL 2 MAIN FLOOR: 1332 ft<sup>2</sup>  
LEVEL 3 MASTER BED-LOFT: 600 ft<sup>2</sup>  
TOTAL CONSTRUCTION: 3081 ft<sup>2</sup>

caldera

## AT RED MOUNTAIN RESORT



CALDERA IS A SKI IN COMMUNITY AT THE BASE OF **RED MOUNTAIN RESORT**

[www.liveatred.com/caldera](http://www.liveatred.com/caldera)



E. & O. E. This is not an offering for sale. An offering for sale may only be made after filing a Disclosure Statement under the Real Estate Development Marketing Act. Contact the developer That Seventies Project Development Ltd. or the agent (Century21 / 2140 Columbia Ave Rossland, BC V0G 1Y0 / phone 250-362-5254) for further details as well as a copy of the Disclosure Statement when available. After a Disclosure Statement is filed, the developer reserves the right to make modifications to design guidelines, specifications and dimensions. Prices are subject to change and can be withdrawn at any time.

Mary Amantea - Cell/Text/Voice Mail : 250-521-0525